



To enquire about enrolling your child
for guitar or keyboard lessons
phone the Music Bus on
1300 1 MUSIC
(1300 168 742)

If you would like The Music Bus
to attend your school
phone to request an information pack
for your school principal.

Visit our website at
www.themusicbus.com.au
or
email info@themusicbus.com.au

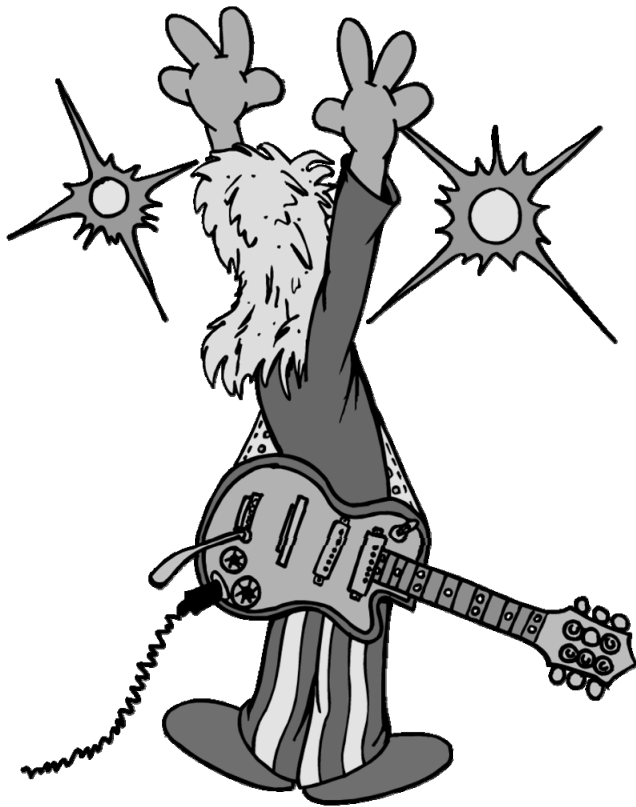
© 2010 Matt Hughes
All Rights Reserved. No part of this book may be reproduced
without permission from the copyright owner.

WELCOME

This book presumes the student is familiar with the material covered in Rock'n Guitar Book 1.

Look for the **Easy** **Intermediate** **Advanced** labels.

They are your guide to the difficulty of a section.




Practise

If you want to become a good guitarist you have to practise regularly.

A few minutes each day is best.

The CD in the back of this book makes practising easy and fun.

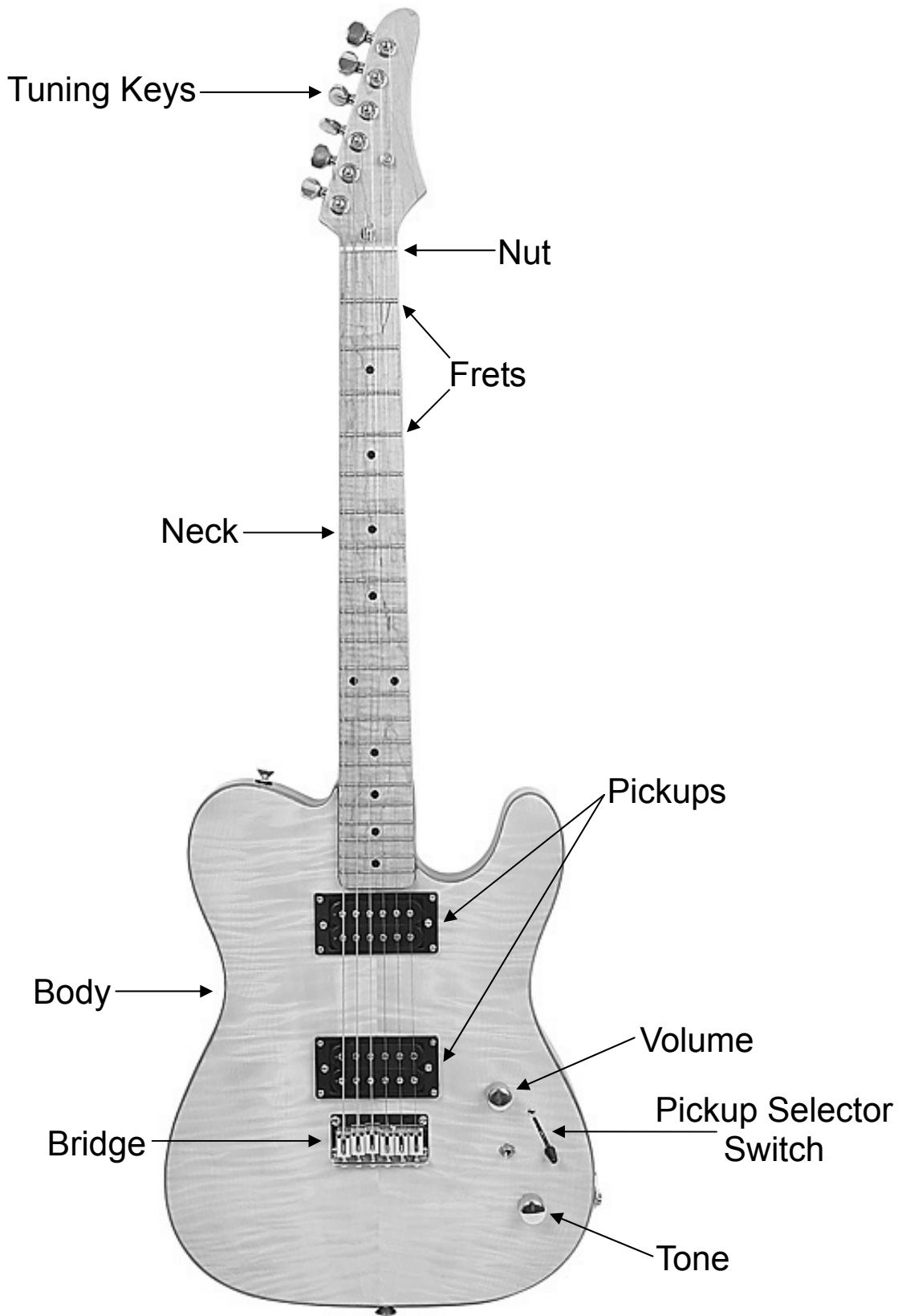
It contains backing tracks for all of the songs in the book so you can jam along.

Look for the CD symbol to find the track number.  Track 1

CONTENTS

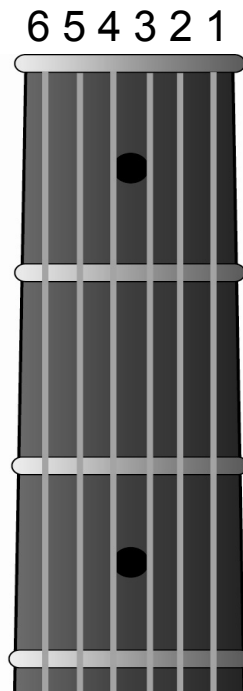
Title	Page	CD Track
The Shake	8	2
Secret Spy	9	3
The Metal Shake	11	4
Spanish Song	12	5
Spanish Song (Advanced)	16	8
Aura Lee	17	9
Mysterious East	18	10
Salty Sailor	19	11
Surfs Up	20	12
Let's Rejoice	21	13
Jingle Bells	23	14
Beethoven's Bop	24	15
Frere Jacques	25	16
Jolly Good Fellow	26	17
Taj Mahal	27	18
The Riff	28	19
Steam Train	31	22
Worried Man Blues	32	23
When The Saints	34	24
The Bass	35	25
The Shadow	36	26
Spider Fingers	37	27
Minuet in G	38	28

PARTS OF THE GUITAR



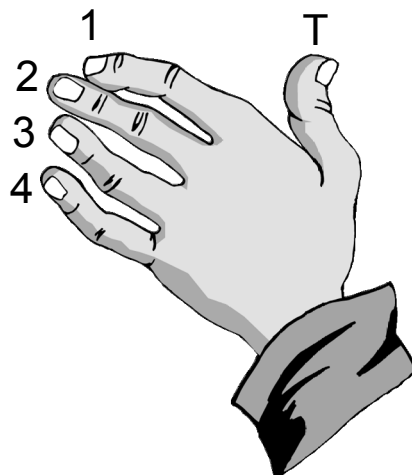
STRINGS ON THE GUITAR

The guitar has 6 strings.
They are numbered from 6 through to 1.
String 6 is the thickest string.



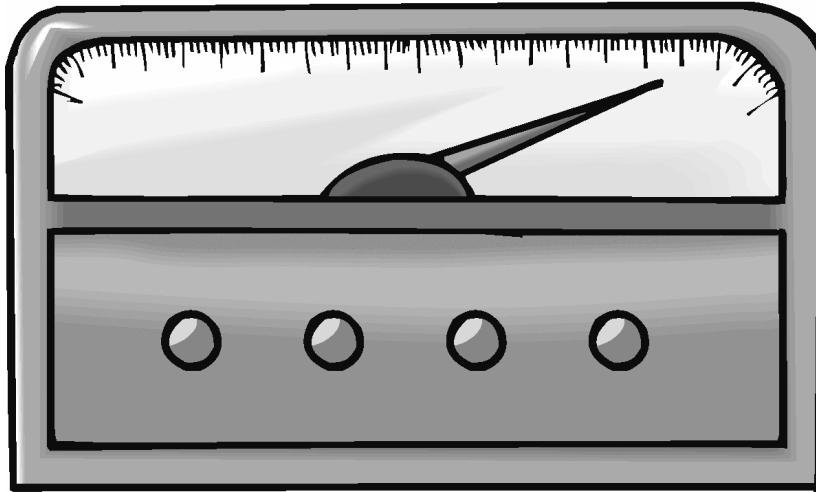
FINGER NUMBERS

Your left hand fingers are numbered 1 through to 4.
The thumb is given the letter T.

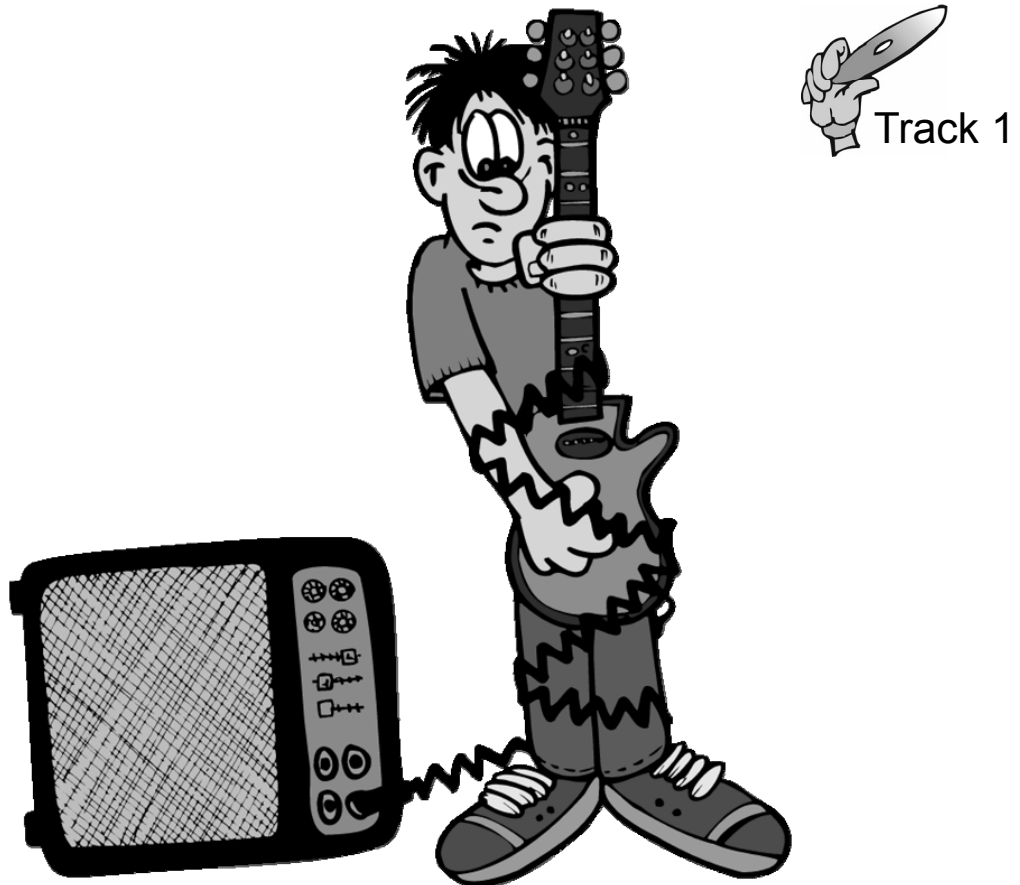


HOW TO TUNE YOUR GUITAR

The easy way is to use an electronic tuner.



Or you can use the supplied CD.
Match the pitch of each string with the pitch on the CD.



HOW TO TUNE YOUR GUITAR

You can also tune the guitar to itself.

Play String 6 / Fret 5 and

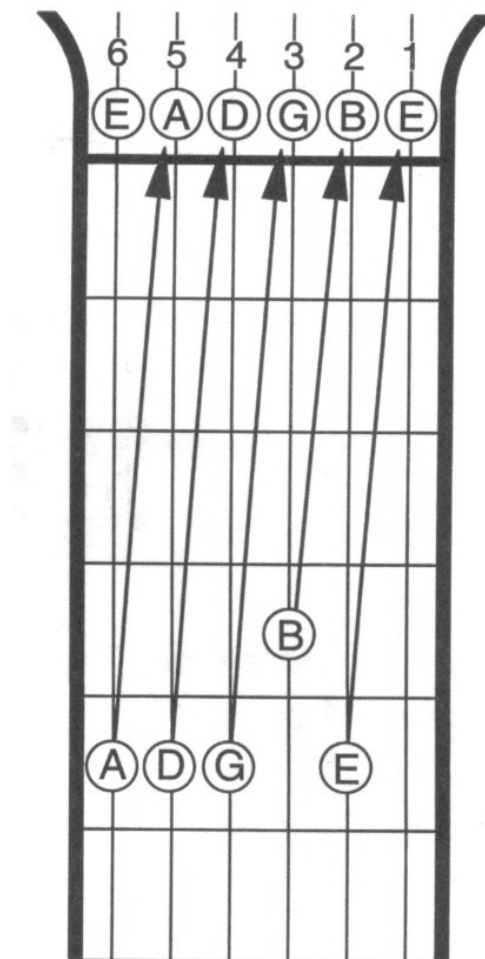
String 5 / Open at the same time.

Now adjust the tuning on String 5 until both strings sound the same.

Repeat for all the other strings.

Note: String 3/fret 4 should match String 2 open.

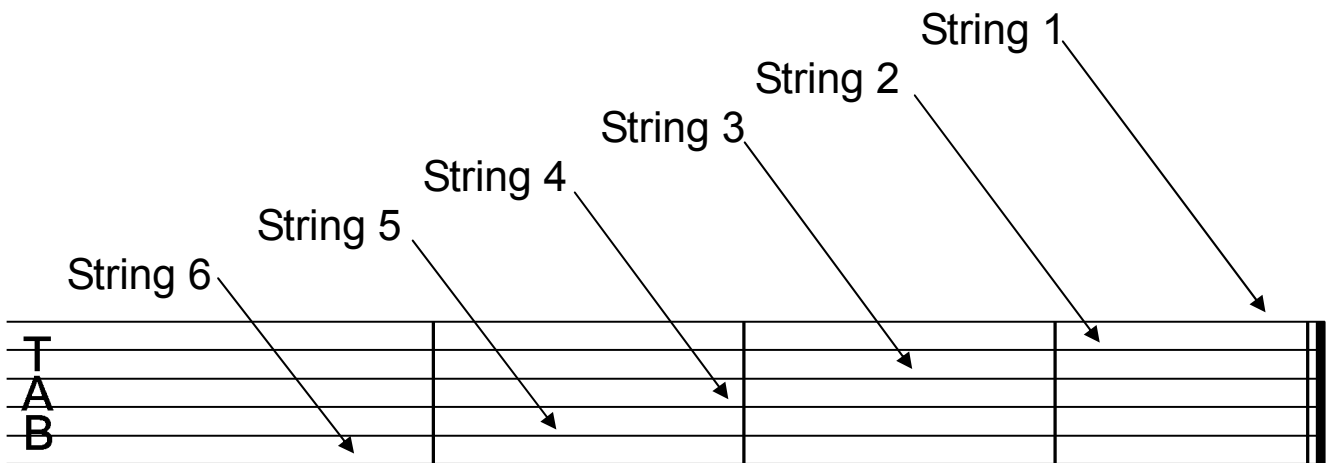
The diagram below should help.



TABLATURE

Tablature, or TAB for short, is a method of writing music especially for guitar. It consists of 6 lines.

Each line represents a string on the guitar. The top line represents string 1, the 2nd line string 2 and so on .



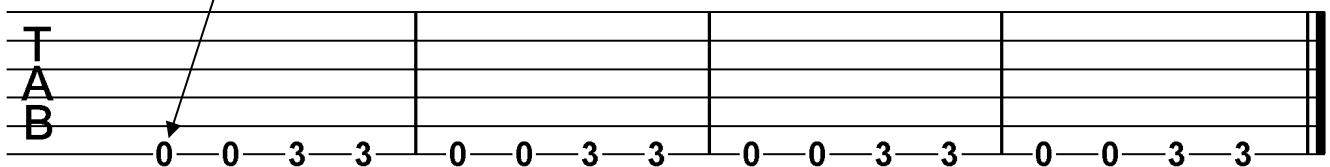
These numbers indicate which fret to put your left hand finger on.



Track 2

Easy

The Shake



SECRET SPY

Is your TAB reading a little rusty?
This simple song should help.



You need to play two notes at once in this song.
The notes are on string 6 and 5.
Strum down for each note.
0 means play that string open.



Easy

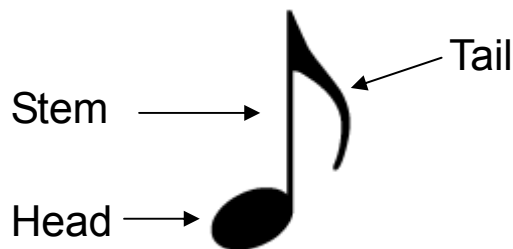
T																			
A																			
B	2	2	2	2	3	3	3	3	4	4	4	4	3	3	3	3			
	0	0	0	0	0	0	0	0	0	0	0	0	0	0	0	0			

MUSIC NOTATION

Tab can tell us which notes to play but unfortunately does not tell us when to play them.

It has no information about the timing of the notes.

The time value of a note is determined by the note head, stem and tail.



 **Whole Note (Semibreve)** - held for 4 beats.

 **Half Note (Minim)** - held for 2 beats.

 **Quarter Note (Crotchet)** - held for 1 beat.

 **Eighth Note (Quaver)** - held for a $\frac{1}{2}$ beat.

 **Whole Note Rest** - 4 beats.

 **Half Note Rest** - 2 beats.

 **Quarter Note Rest** - 1 beat.

 **Eighth Note Rest** - $\frac{1}{2}$ beat.

MUSIC NOTATION

Treble Clef

Music is written on five lines called the **stave** (staff).

Bar Lines

Double Bar Lines
Indicates end of song

Time Signature.
The top number tells us there are 4 beats in every bar.
The bottom number tells us the beats are 1/4 beats (crotchets).

Notes are written on the lines or in the spaces of the stave.

Easy

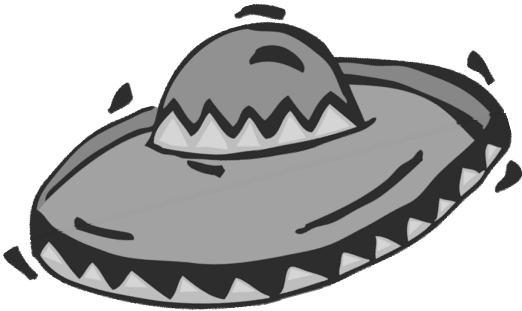
The Metal Shake



Rest
Means don't play.

Repeat dots
Means go back to the beginning and play again.

SPANISH SONG



Don't forget, notes on the top line of TAB are played on string 1.
That's the thinnest string on your guitar.



Track 5

Easy

Musical notation for the first system, including a treble clef, a 4/4 time signature, and a TAB line with fret numbers: 0 0 | 0 1 3 1 | 0 0 | 0 0

Musical notation for the second system, including a treble clef and a TAB line with fret numbers: 0 0 | 0 1 3 1 | 0 1 0 | 2

On the next pages we will learn some chords that will sound great with this song.

